

121 FT / FORD TRANSIT

MADE IN
FRANCE



TELECOMS



LT LEASING COMPANIES



LOCAL AUTHORITIES



SIGNS/PUBLICITY



RETAILERS



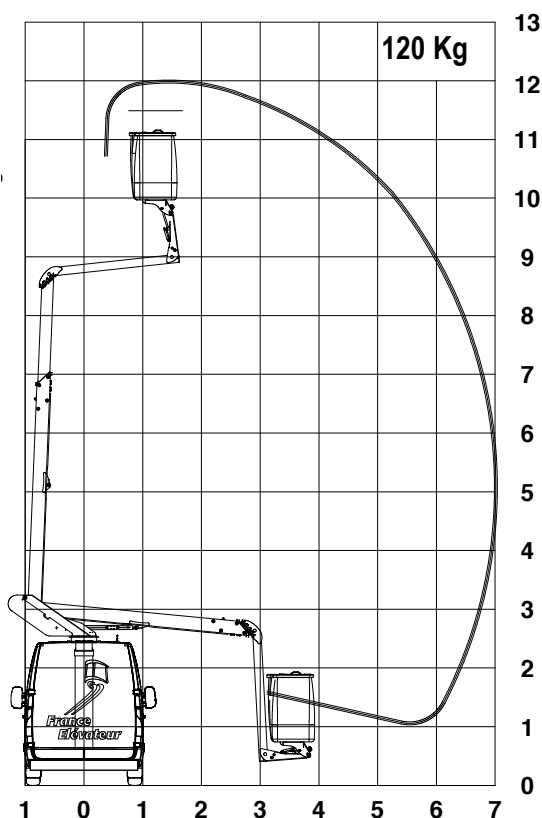
LIGHTING



ELECTRICIANS

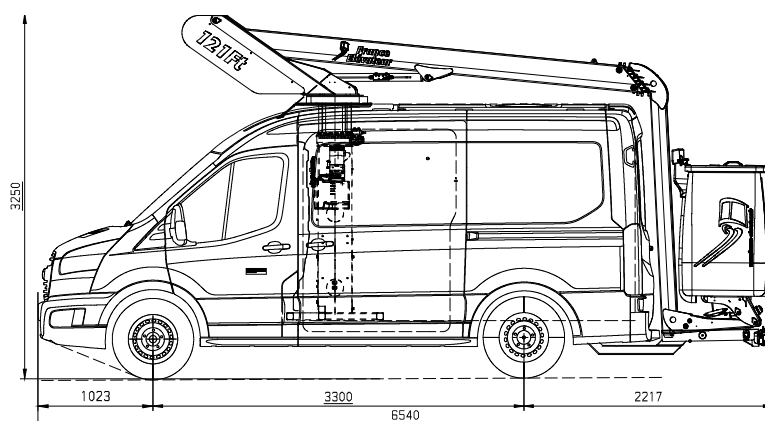


OTHER ACTIVITIES



This unit has given perspective to the aerial work platform on 3t5 van concept since 1980 and has continued to evolve ever since to meet the market's re-quirements. It has a steady track record and is still the undisputed **best-seller in the Telecoms and street lighting market** today :

- Excellent working height and outreach performance
- Use with or without stabilisers
- Cargo space in relation to the payload
- Numerous options adapted to each sector and activity



TECHNICAL SPECIFICATIONS

As standard : ● optional : ○

Working height	12,00 m	●
Floor height	10,10 m	●
Maximum outreach without outriggers	7,00 m	●
Basket load	120 kg	●
Turret rotation	400°	●
Maximum usage tilt/slope	5% / 15%	●
Basket dimensions	850 x 780 x 1150 mm	●
GVW	3 500 kg	●
Steel arm with 1 telescopic element		●
Cable drag chain in telescopic element		●
Electrical-hydraulic and sequential controls		●
Rigid protection for upper console		●
Starting up remote control and lower console in cab (5 m cable)		●
Rear platform with integrated underrun protection bar		●
Ouverture porte arrière droite nacelle en position transport		●
Return to road position indicator in cab		●
Time counter		●
Cross slope audio indicator		●
Manual backup pump		●

EQUIPMENT

12Vdc hydraulic unit		○
Engine start and stop in the basket		○
Basket horn		○
Electric backup pump		○
BT 200 (included BT200 full basket door + backup generator)		○
230 V plug and differential protection in the basket		○
Removable and insulated toolbox in the basket		○
12Vdc-230 Vac - 2 Kva converter		○
Removable and adjustable 12 Vdc LED working light		○
Wall and floor protection		○
Anti-skid floor protection		○
Interior design		○
Cone holder in cargo area		○
Signal panel support in cargo area		○
Fixed ladder holder		○
Retractable ladder holder		○
750 kg coupling hook (GVW limited to 4250 kg)		○
Reversing radar		○
Reversing camera		○
2 xenon lights + retro-reflective marking C1		○
Flashing light under the basket		○
Maintenance contract		○

updated : 06/2021



ZAC DU PLATEAU

54630 FLAVIGNY SUR MOSELLE - FRANCE

Phone: +33 (0)3 83 23 31 32

commercial@france-eleveur.fr | www.france-eleveur.fr

BORDEAUX33450 Montussan
☎ +33 (0)5 56 89 90 72**PARIS SOUTH**91220 Brétigny sur Orge
☎ +33 (0)1 60 85 14 23**LAVAL**53000 Laval
☎ +33 (0)2 43 49 07 28**MARSEILLE**13300 Salon de Provence
☎ +33 (0)4 90 59 36 27**LENS**62970 Courcelles les Lens
☎ +33 (0)3 21 79 32 15**BENELUX**8587 Espierres
☎ +32 (0)56 51 40 26**PARIS WEST**95310 St-Ouen l'Aumône
☎ +33 (0)1 39 22 12 12**TOULOUSE**31770 Colomiers
☎ +33 (0)5 34 35 83 50**LYON**69800 Saint-Priest
☎ +33 (0)4 37 25 33 90**NANTES**44220 Couëron
☎ +33 (0)2 40 57 02 83**CLERMONT-FERRAND**63050 Clermont-Ferrand
☎ +33 (0)4 73 84 23 22**GERMANY**04179 Leipzig
☎ +49 (0)341/30 88 95-0